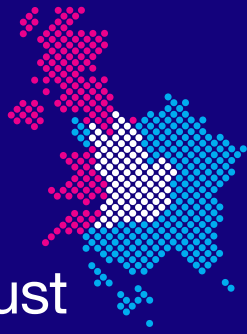




## The Lefèvre Trust

CHANNELLING↑IDEAS

A new opportunity for young people to embark on a collaborative venture with France



## The Lefèvre Trust

**The Lefèvre Trust supports exciting joint projects between young people in the UK and France, to create lasting links and increase understanding.**

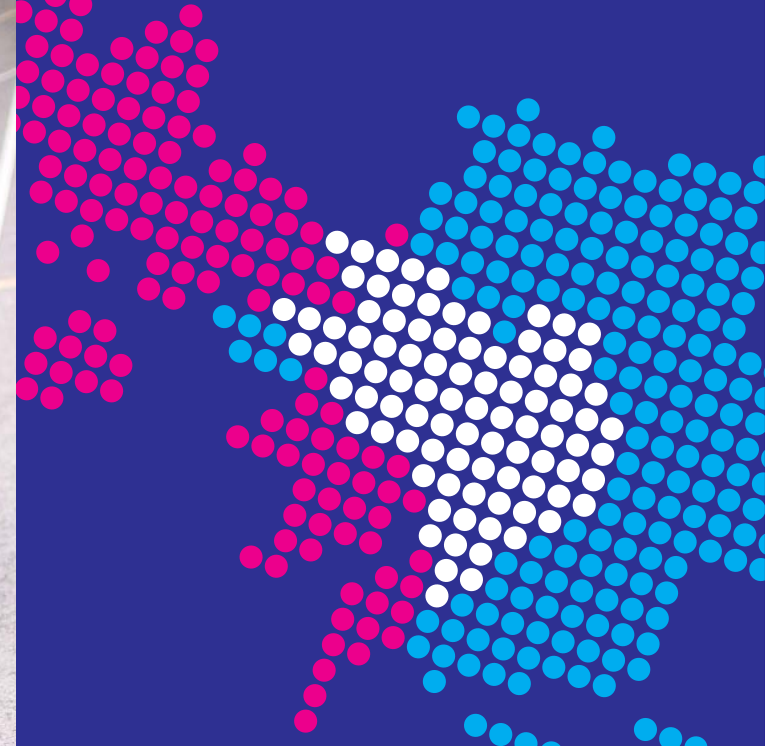
You can receive funding for visits to help young people collaborate with a French partner group. The scheme is open to *all* groups of young people aged 11 to 19. Schools, youth groups, sports teams and extra-curricular clubs are encouraged to apply.



## CHANNELLING↑IDEAS

- Motivate young people to actively participate, change their perspectives and broaden their horizons.
- Engage previously disengaged young people by channelling their creative skills into a new, exciting context.
- Include young people who wouldn't normally have the opportunity of an international visit.
- Develop young people's self-confidence, communication skills and cultural awareness.





## How do I go about it?

**First, find a French partner group. You might choose a club from an existing partner school in France, or a group you know through a European network.**

Next, decide on a project together. All projects need to have a specific aim and a central theme, which could be anything from arts and culture to enterprise. You could design a website, work with your community, or hold a debating workshop – the topics are very flexible and we'll consider all applications, so long as they have specific aims and are collaborative.



## How much funding is available?

- Up to a maximum of £5,000 for one-way UK–France visits
- Up to a maximum of £10,000 for two-way UK–France visits
- Up to a maximum of £10,000 for one-way/two-way visits between the UK and Martinique, Guadeloupe, Réunion and French Guiana



## Who can apply?

We welcome applications from all sectors working with 11- to 19-year-olds in Wales, England, Northern Ireland and Scotland. We particularly encourage applications involving young people who would not usually have access to international opportunities.

**For more information and to apply for the scheme, visit [www.britishcouncil.org/school-partnerships-france-lefevre-trust](http://www.britishcouncil.org/school-partnerships-france-lefevre-trust)**

© British Council 2008  
Design Department/X061/NLP  
Photography © Mat Wright  
**The United Kingdom's international organisation for cultural relations and educational opportunities.** A registered charity: 209131 (England and Wales) SC037733 (Scotland).

