



[www.safenetwork.org.uk](http://www.safenetwork.org.uk)

# 'A Report on the South West Third Sector Safeguarding Audit'

April 2009



# Executive Summary

## Background

Following the *Staying Safe* Consultation with charitable and voluntary organisations, the Department for Children, Schools and Families recognised a need for tailored safeguarding support for the Third Sector.

A new £2.2m unit managed by the NSPCC and Children England to help protect eight million children taking part in voluntary activities was launched in June 2009. The need for this unit was reinforced by a series of regional Safeguarding Audits undertaken in the Spring 2009 in the UK to assess the accessibility of safeguarding training and support for the Third Sector.

## The SW Regional Audit

The audit was carried out in order to inform the report to Children England and the NSPCC. The audit and subsequent report was requested in February 2009 by VCS Engage, on behalf of Children England.

It gives an overview of the access the third sector in the south west region has to safeguarding advice, training and support, and a baseline assessment of need. The South West region covers 16 local areas: Bath and North East Somerset; Bournemouth; Bristol; Cornwall; Devon; Dorset; Gloucestershire; Isles of Scilly; North Somerset; Plymouth; Poole; Somerset; South Gloucestershire; Swindon; Torbay and Wiltshire. The information was collated from a regional audit carried out by The South West (SW) Regional Youth Work Unit (RYWU) in March and April 2009 across all 16 areas. The audit asked third sector organisations for information about training and support provided by Local Safeguarding Children's Boards (LSCB's), Children's Trusts and other statutory partners, voluntary sector infrastructure bodies and individual organisations with a training remit.

In particular, data for each of the Children's Trusts areas in the SW was sought on;

- where ( geographical and type of group) the sector is getting any training and support and where there is nothing;
- what level of training is being offered and the costs ( approx) if any;
- what are the priority needs within the SW region;
- what resources and plans exist to provide support over the next 12-24 months
- what do third sector and statutory sector colleagues believe works well, which could be supported or built on( this may be particular training packs or a format for delivery or ongoing support etc);
- what is the contact with and access to safeguarding support like for the following groups in particular;
- volunteer led/ community based groups e.g. Mums and tots, Saturday football clubs; Mosque/ Sunday schools etc,
- those who do some work with children and young people but not as their main role, such as community centres, sports clubs etc.
- groups working with disabled children and young people
- groups working on environmental projects involving children and young people
- play projects

## **The Methodology**

The information for the audit was gathered in the form of an online survey using Smart Survey software; this software also provides raw and analysed data during and at the end of the survey period of 6 weeks. The questions asked who the respondent was, their organisation, job role and where in the region they worked. It also sought to determine the number of paid and non paid staff undertaking activities with children and young people and the nature of these activities. It also asked the respondent what type of safeguarding training they had received, from whom, at what cost and to what standard. Respondents were also asked what other type of support they received and what support they would find the most useful.

This survey was launched through 17 regional networks including Local Safeguarding Children's Board Chairs, Children's Trusts Voluntary Sector reps network and The South West ACRE Network of Rural Community Councils. The selected networks were considered for their abilities to access hard to reach community, sports and faith groups. A prize for one completed survey, drawn 'out of a hat' to win £100.00 was offered.

A second questionnaire was also devised and sent to each local authority Safeguarding training lead to ascertain their capacity for offering training and support to the Third Sector.

129 completed surveys/questionnaires were returned.

The audit was designed and delivered by Fiona Phur (Voluntary Youth Sector Development Worker) and Hayley Lazarus (Youth Work Administrator) at the SW RYWU at Learning South West, Bishops Hull, Taunton. The subsequent report author was Fiona Phur.

## **The Findings**

The main findings are that, in the SW region, nearly 67% of responders have received high quality safeguarding training recently and receive high quality and timely safeguarding information. Organisations in the Faith or Environmental category are more likely to have received training. The majority of training was received from the local authority/LSCBs or from own in-house training programme

However, up to a third have received no training; or any planned in the future. Organisations in the Arts, Family and Uniformed categories are less likely to have received training.

Good quality training is generally available at Basic /Level 1 for little or no cost; average £25.00

The most useful support and information still needed by respondents were training sessions, training packs and newsletters/e bulletin; however, nearly 30 % of respondents stated that they need more or better safeguarding information and support.

## **The Conclusions**

It was concluded that the size and type of organisation may be a barrier to accessing safeguarding training and support. Smaller organisations, those with an average staffing profile of 7 paid and 15 unpaid staff, are considerably less likely to have been offered access to training. However, where training has been received, the majority of training came from the local authority/LSCB or from own in-house training programme and the overall feeling was that this training was of a high standard.

## **The recommendations**

The recommendations are that the new Safe Network should undertake a mapping exercise – using existing information from established networks – to determine who the ‘vulnerable’ organisations are, check organisations’ staffing profile information and organisational types to determine priorities and establish those organisations whose staff lacks any Basic Awareness/ Level 1 training as a priority group. Third sector organisations should be supported in achieving better engagement with LSCBs and that training methods should be assessed for most effective accessibility.

Some form of quality control or evaluation should be in place to determine the standard of training given and some thought should be given to the progression to higher levels of training opportunities; especially those undertaking frequent, intensive or overnight activities with children and young people (regulated activities as defined by the new Barring and Vetting criteria).

Finally, strong consideration should be given to how to promote safeguarding in such a way that the message is received by hard to reach communities.

## Contents Page

<b>Introduction.....</b>	<b>6</b>
1.1 Background.....	6
1.2 The Vision.....	6
1.3 The Mission.....	6
1.4 What are the needs of the third sector for safeguarding support?.....	6
1.5 Regional Profile.....	7
1.6 Objectives.....	8
<b>2 Methodology.....</b>	<b>9</b>
2.1 Stage 1.....	9
2.2 Stage 2.....	9
2.3 Stage 3.....	10
<b>3 Findings.....</b>	<b>10</b>
3.1 Introduction.....	10
3.2 The Audit results.....	13
3.3 The Training Offer.....	15
3.4 Cost of training.....	16
3.5 Standard of training.....	16
3.6 Attendance.....	17
3.7 Future training.....	17
3.8 General Safeguarding Support.....	18
<b>4 Conclusion.....</b>	<b>20</b>
<b>5 Recommendations.....</b>	<b>21</b>
<b>6 Appendices .....</b>	<b>22</b>

# **1. Introduction**

## **1.1 Background**

The establishment of a national safeguarding unit for the Third Sector in England, was one of the government's commitments in the Staying Safe: Action Plan. The NSPCC and Children England (formerly NCVCCO) have been commissioned to set up and jointly manage this Unit. They will do this by working closely with and through a number of delivery partners, umbrella groups and existing national, regional and local networks and infrastructures.

All children and young people have the right to feel safe. They should be able to enjoy participating in activities outside the home and to take proportionate risks, which are an essential part of growing up. The majority of the estimated eight million children taking part in out of home activities do so safely, yet a minority are at risk from those responsible for their care.

## **1.2 The vision**

The vision is for all children and young people taking part in organised voluntary activities to be safe from harm.

## **1.3 The mission**

The mission is to build on the strengths of the voluntary and non-profit organisations in England, helping to keep the safety of children and young people at the heart of what they do.

This will be done this by sharing reliable advice and support with groups working with children and young people.

Parents will be empowered to ask questions of organisations to whom they entrust their children's care.

## **1.4 What are the needs of the third sector for safeguarding support?**

The Third Sector is large and diverse, providing a wide range of services and activities for children, young people and their families, guardians and carers. There is much good practice within the sector which can be shared and built on. In order to provide effective safeguarding support to the sector the Unit will:

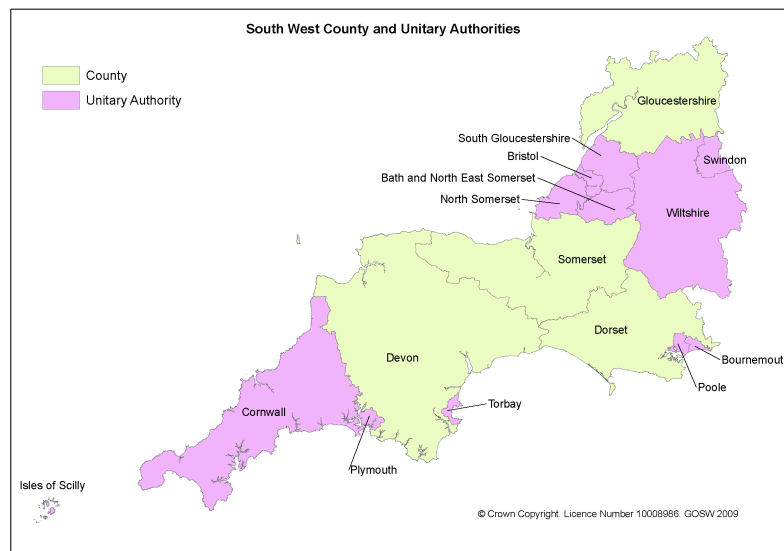
- Provide reliable, accessible and timely safeguarding information and advice and support, free at the point of delivery
- Provide support at national, regional and local levels throughout England
- Be sufficiently flexible to address the needs of organisations with very different infrastructures, capacity and cultures tailoring its approach for different audiences and services

- Take a strategic approach based on agreed standards and an analysis of priority needs and existing strengths within the sector
- Maximise ownership, engagement and reach through partnership working with key stakeholders and umbrella organisations
- Involve children, young people and parents in developing its focus and thinking
- Recognise the role and contribution of volunteers and trustees as well as that of paid staff
- Take a proportionate and enabling approach to keeping children safe
- Provide an independent and informed voice representing the safeguarding needs and contribution of the sector to government, to the ISA and to LSCBs
- Provide a link with workforce development initiatives and bodies such as CWDC to ensure a consistency of approach.

### 1.5 Regional Profile

The South West peninsula extends over 350 km from the south-western tip of Cornwall to the northern border of Gloucestershire. It has the largest land area of the nine English regions and has the highest percentage of land classified as rural.

Over 80 per cent of the land area is agricultural, predominantly dairy farming but with some arable, horticultural, beef and sheep, and just under 10 percent is urban or suburban. The largest urban centres are Bristol, Bournemouth, Poole, Plymouth, Swindon, Gloucester, Torbay, Cheltenham and Exeter. Together, these eight areas account for over a third of the total population of 5.1 million people.



There are 16 local areas: Bath and North East Somerset; Bournemouth; Bristol; Cornwall; Devon; Dorset; Gloucestershire; Isles of Scilly; North Somerset; Plymouth; Poole; Somerset; South Gloucestershire; Swindon; Torbay and Wiltshire. For the purposes of the survey Cornwall and the Isles of Scilly have been grouped together as this has been the policy of their joint LSCB training.

## **1.6 Objectives**

### **i. Key outcomes**

There are five key outcomes for the Unit:

1. Third Sector organisations have effective safeguards in place to prevent the abuse of children and young people.
2. Recruitment practices for paid staff and volunteers in the Third Sector reflect best practice and are demonstrably safer.
3. Organisations have in place effective and proportionate arrangements for assessment and management of risk in all their activities involving children.
4. The safeguarding arrangements of Third Sector organisations are integrated into local inter-agency safeguarding arrangements.
5. Parents and carers of young people are able to identify the basic safeguarding arrangements that organisations involved with their children should have in place and to reassure themselves that this is the case.

The objective of the regional audit and the subsequent report is to evidence what safeguarding training and support is available to the third sector in the region; including quality, cost and what plans are in place for those organisations/individuals who are not currently being supported. The audit seeks to gain the opinions and experiences of 'harder to reach' groups working with; for example community groups, faith groups, sports clubs, disabled children and young people and environmental projects. The report aims to highlight training and support needs in defined areas and working environments.

### **ii. Scope**

This report examines the experiences of the third sector from the perspective of those agencies offering training and support to the third sector and from those individuals and organisations who operate in the SW region and who may or may not currently be recipients of safeguarding training and support.

It does not examine the outcomes of training and support from the perspective of the service users or from commissioners of services or any other agencies involved in the work of the surveyed individuals/organisations as this information has not been requested by the National Safeguarding Unit for the Third Sector.

## **2. Methodology**

### **2.1 Stage 1**

Training managers or lead trainers from the 15 LSCBs in the south west region were contacted and asked to complete a questionnaire about their capacity to offer training and support to the third sector. The questionnaire (Appendix A) with a covering letter was emailed to the identified person and a commitment from us to contact them after a few days to assist with any areas or to complete the questionnaire over the telephone.

There were 4 respondents to this stage and their results have been collated and analysed on the LSCB Trainers Questionnaire Results (Appendix B).

The response to this stage was disappointing however; the results are encouraging from the four who did respond. There could be two reasons for a poor response; the offer was for the identified person to be phoned back and, being trainers, they were not at the desks or in the office on the occasions we called them. Our final contact was us leaving a message asking them to return the questionnaire without telephone assistance. The other problem was that a national audit had also been commissioned and some trainers received our questionnaire and one from DMSS Research & Consultancy. Although, with agreement from the consultant Di McNeish, I encouraged them to complete my questionnaire and return it; this issue did raise some antipathy towards the audit as a whole.

### **2.2 Stage 2**

16 third sector networks were contacted and asked to circulate an electronic on-line survey using Smart Survey software ( [www.smart-survey.co.uk](http://www.smart-survey.co.uk)).

These networks were:

LSCBs Chairs; LSCBs Vol Sector reps; SW Creating Excellence; The SW Early Years Network; The SW Pre School Alliance; Sport England SW Regional Sports Boards Leads; SW NAVCA members; Voluntary Youth Organisations Network – SW; Childrens TrustsT Vol Sector reps network; Equality SW; SW Regional Youth Arts Network; SW Forum; SW Foundation; Strategic Leads for Positive Activities network; The South West ACRE Network of Rural Community Councils and the Muslim Council of Britain.

A transcript of the on-line questionnaire is shown under Appendix C. The networks also received an A5 flyer which we encouraged recipients to put up on notice boards and in halls as well as using on their websites and in newsletters. As an incentive, we offered £100.00 as a prize to one winner of a completed survey pulled out of a hat. Learning South West ( the parent body of the RYWU) organised a press release to all the local newspapers and radio stations in the region to promote the audit.

124 respondents, chosen by the random method of email selection, were surveyed on-line from 5<sup>th</sup> March 2009 to 20<sup>th</sup> April 2009 – a period of 6 weeks.

## 2.3 Stage 3

The results were analysed using Smart Survey analysis software as this is one of the beneficial features of the software and the reason why it is the preferred mechanism for consultation and information gathering at the RYWU.

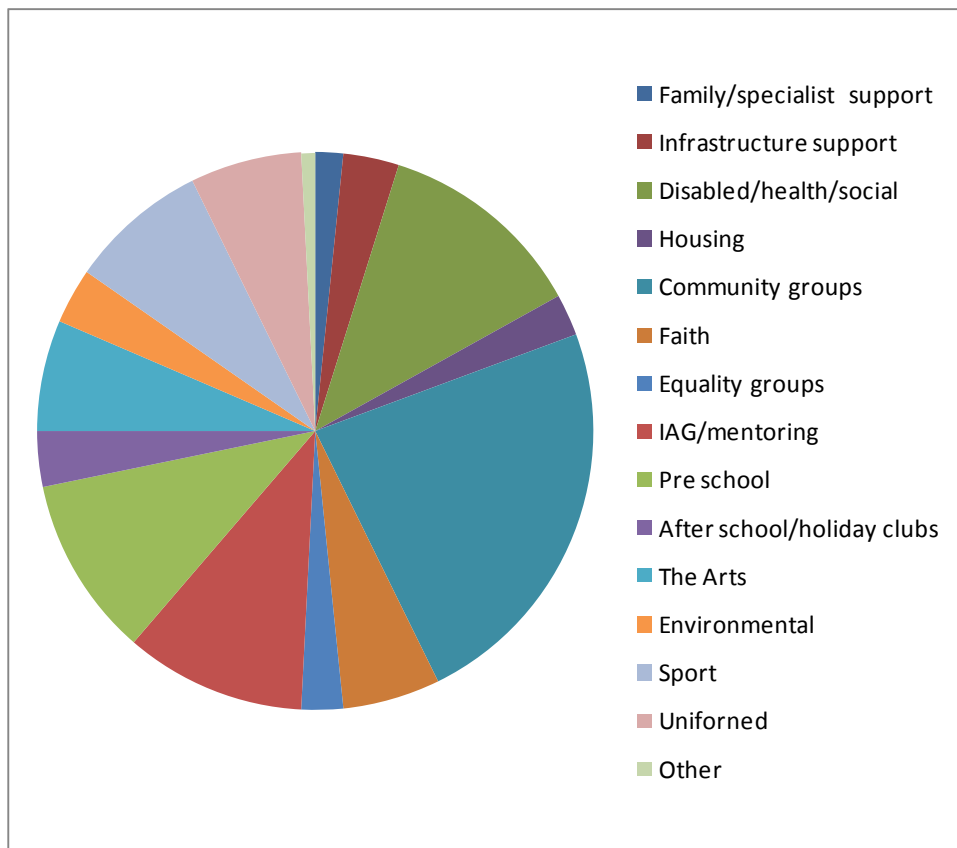
The significance of the results was that some areas responded far more enthusiastically than others (Devon represented more than half of the responders as opposed to Poole which showed no response at all) but that there was a good broad range of ages, organisations and activities represented in the results; as discussed further in the Findings section. This is evidence that the networks selected to circulate the survey were able to reach the organisations that we particularly wished to seek opinion from.

## 3. Findings

### 3.1 Introduction

In general, the findings indicated that safeguarding support and training is generally available in the region, at reasonable or no cost to organisations and that organisations/individuals are happy to express the type of support that works best for them.

We grouped the 124 respondents into 15 sub headings taken from the information that they gave us about the nature of their work.



In many cases there was evidence that organisations fell into both categories; however, we made a decision to categorise to whichever category gave a clearer

understanding of the nature of the work or the type of organisation. For example the Somerset Racial Equality Council has been categorised under Equalities although the nature of it's role is Infrastructure Support. Also, a Salvation Army project has been categorised under After School/Holiday Clubs rather than Faith as it's core response was about offering after school care.

Also, under each category we found a diverse range of activity especially in Information Advice and Guidance which showed some generic work from The Smash Youth project in Swindon, Tiverton Market Centre Drop In, Youth Enquiry Service Brixham and The Zone Plymouth to quite specific services from BADAS alcohol support, CRASAc Survivors of Sexual Assault, Penhaligon's Friends Bereavement Support and Victim Support Wiltshire who work with victims aged 13 years onwards.

Similarly, the largest category - Community Groups – showed a very wide range of activities ranging from generic community work such as Exeter Community Initiatives, Forches Community Association, and Pembroke Estate Management Board; youth clubs and associations like Young Bristol, Bovey Tracey Youth Café and Winkleigh Youth Club ; volunteering schemes like those run by Young Devon, Dorset Youth Association, the National Trust and Somerset Youth Volunteering Network.

The uniformed category was predominantly represented by the Scouts ; however, a girl guide group and a Boys Brigade troop also responded.

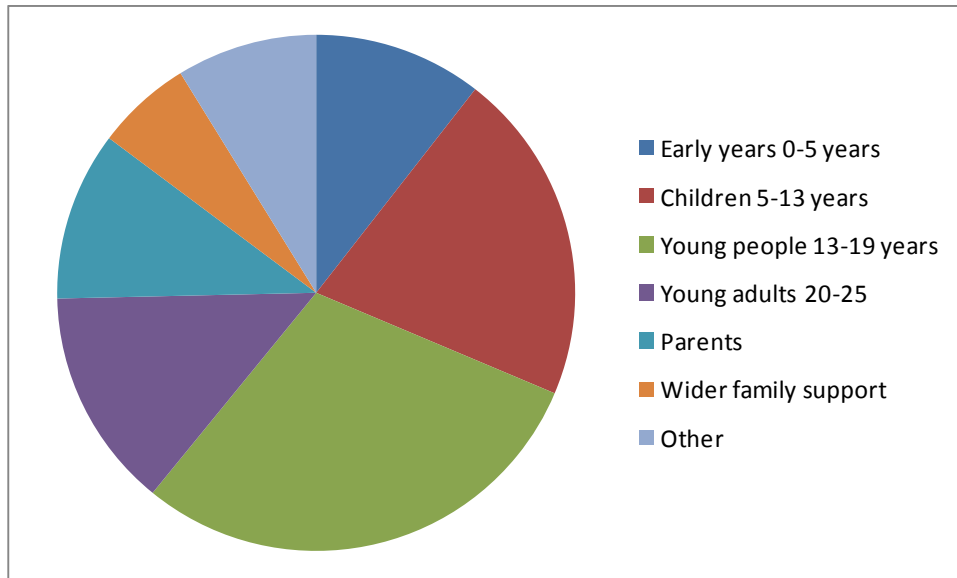
The faith group was represented by Church of England and Methodist clubs and groups; despite approaching equality networks we did not receive respondent from mosques and other minority faith groups.

The three Equality category respondents were from the Somerset racial Equality Council, Traveller Space for gypsies and travellers and X-Plore Youth group for Lesbian, Gay, Bisexual and Transgender (LGBT).

We categorised Disability into it's own category rather than the Equalities category. This was due to the high number of respondents and we also included some other health and social care activity within this group including voluntary sector organisations who were running contracted work for health trusts – for example; Exeter Children and Adolescent Mental Health Services (Devon PCT).

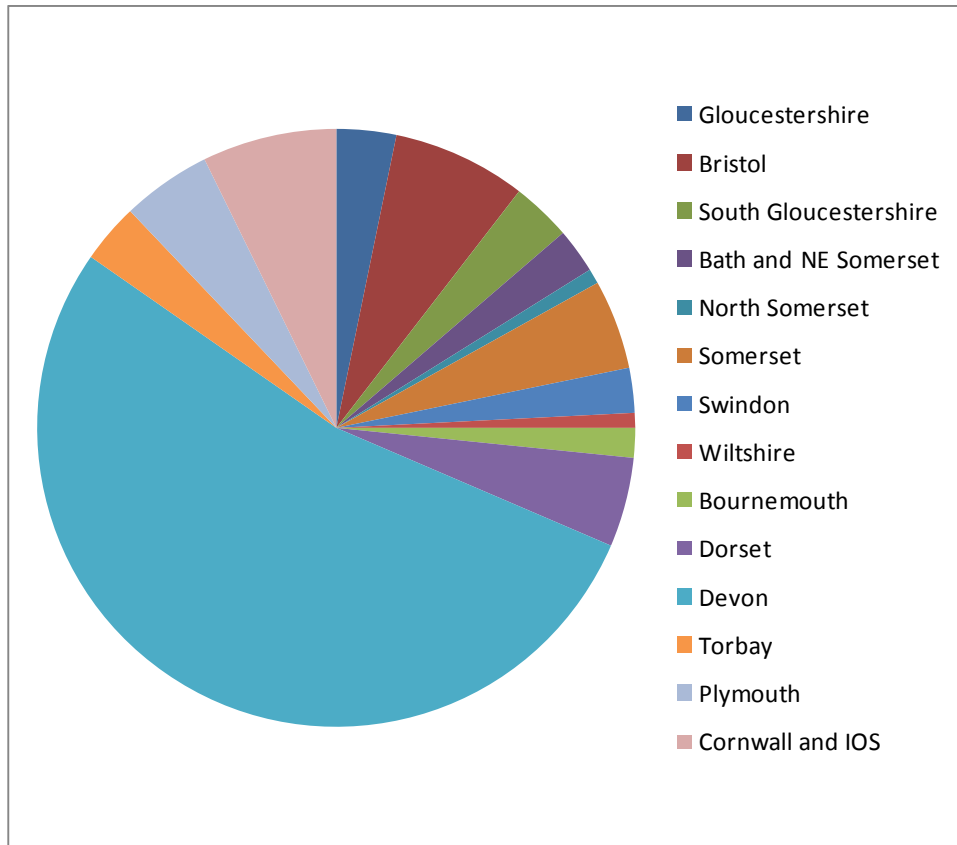
Our Sports category included sports such as badminton, fencing, table tennis, cricket and canoeing; also, not surprisingly for the south west, three different surf clubs responded

We also asked our respondents to tell us about the age ranges that they regularly worked with. The results are quite evenly spread and many organisations were able to say that they worked with the entire age range – eg family counselling services and community associations.



Our respondents came from all over the south west region; unfortunately there was no response from Poole but every other area was represented. 20% of our respondents worked for a national organisation; 16% of our respondents worked for a regional organisation but the majority of our respondents ( 65%) worked for a local organisation or community group. Again, this gave us the reassurance that we had reached into the type of activity and work that the audit wished to hear about.

The most surprising result of the survey was the level of engagement from Devon. However, Devon has a highly sophisticated CVS network with specialist networks for children and young people. Devon County Council has recently been awarded Beacon status for it's commissioning of children's services which has recognised the role of the Children's Trust, LSCB and supporting the voluntary sector in engaging with all the aspects involved in the commissioning process. The role of robust infrastructure support has been fundamental in achieving this status and developing a thriving third sector.



We also wanted to find out the make up of paid and unpaid staff in the organisations that were contacted. Therefore, respondents were asked to advise how many paid and unpaid staff were working in their organisations and 111 respondents were able to give this information. The average number of paid staff was 16 with the range being from 0 paid staff ( 19 organisations) up to 300 paid staff. We omitted to use the numbers of paid staff (6000) shown by Devon PCT as this did not fit into the criteria of being a third sector response.

We asked for the number of unpaid volunteers working in the respondents organisations and this ranged from 0 to 4000 (Volunteer Cornwall) with the average number being 84.

### 3.2 The Audit results

- 83 respondents have had access to safeguarding training within the past 12 months (66.9%)
- 33 respondents have not had access to safeguarding training within the past 12 months (26.65)
- 8 respondents did not know if they have been offered access to safeguarding training within the past 12 months (6.5%)

Based on 124 respondents.

The graph below (Figure 5) shows the areas where responders stated that they had not or did not know if they had been offered safeguarding training within the last 12 months. Again, surprisingly, Devon which had 66 responders overall, also had the highest number of workers who have not yet had access to safeguarding training – 28 in total, which is a percentage of 42% of total responders.

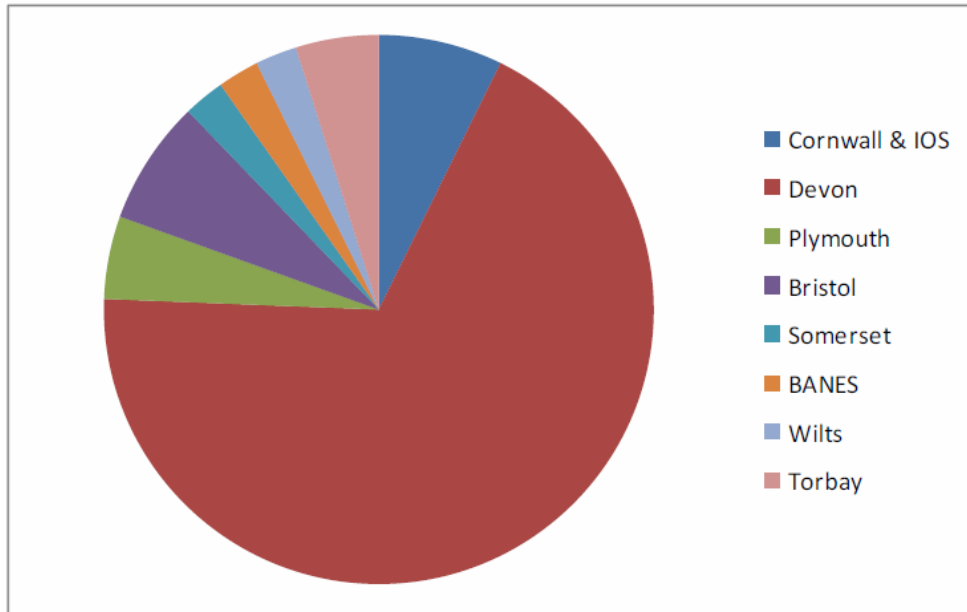


Fig 5

We looked at the make up of the organisations who had not yet had access to safeguarding training (Figure 6).

- The number of paid staff in these organisations ranged from 0 – 70, with an average number of 7 paid staff.
- The number of unpaid staff in these organisations ranged from 0 -80, with an average number of 15 unpaid staff.
- Compared to our average organisation of \*\*16 paid/ 84 unpaid staff; this shows that considerably smaller organisations are not getting access to safeguarding training.

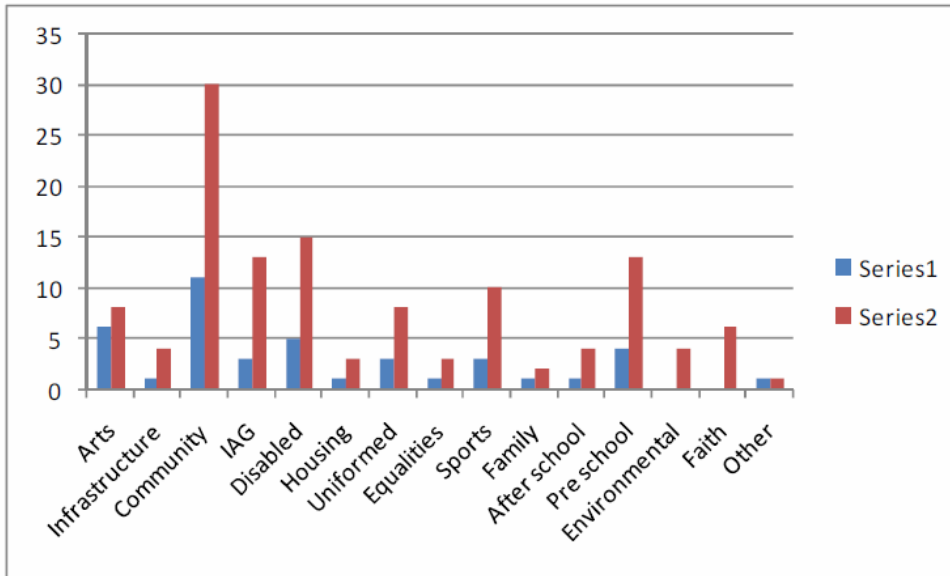
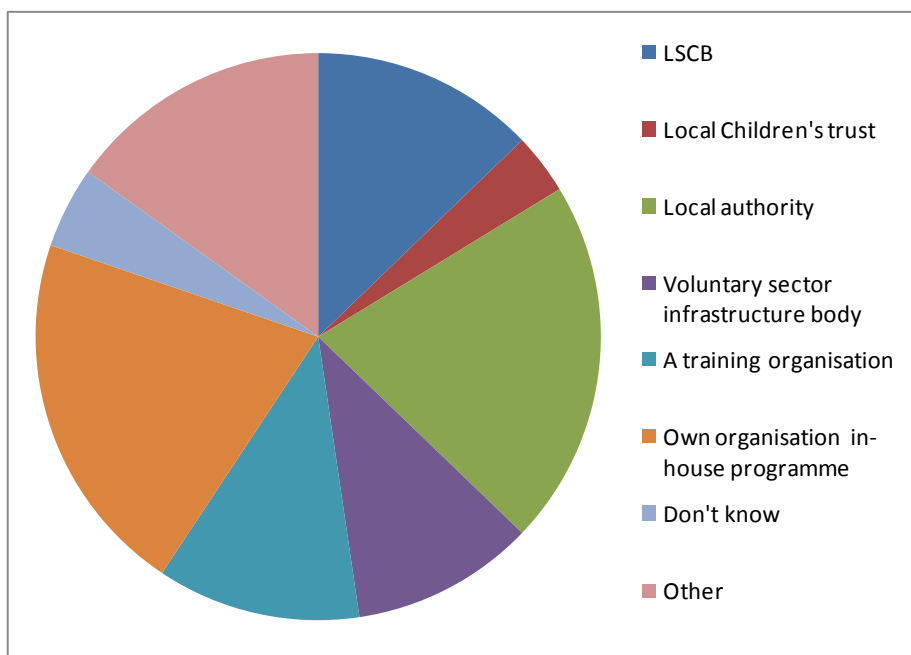


Fig 6

This graph shows the 'as yet untrained' organisation type (Series 1) against the total amount of responders for that organisational type (Series 2). The results are as follows:

- Faith and Environmental had no 'as yet untrained responders'.
- Organisations from the categories Arts and Family were least likely to have received safeguarding training.
- However, after examining those organisations 'as yet untrained but awaiting training', the organisation types least likely to receive training are Arts, Uniformed and Family.

### 3.3 Who offered/delivered the training?



The strongest responses were showing training offered by Local Authority and own In house training. However, it may be possible that some respondents were confused as to whether LSCB training was local authority training.

The larger responses for Other included the police, St John's Ambulance, NSPCC Keep Safe postal training, Mencap, Barnados, the Wildlife Trust UK and colleagues who had undertaken Train the Trainer courses from LSCB training.

In our Stage 1 survey of LSCB trainers (Appendix B) we asked them for recommendations as to how to improve access and quality of training to third sector organisations. Their comments included:

- Where training availability /resources are low or scarce, offer Train the Trainer in Basic Awareness or Level 1 courses to cascade the training onwards. However, organisations must ensure that the right people attend these courses and have the ability to cascade correctly.
- Involve the Third Sector more in the governance and planning of LSCBs and training.
- Better co-ordination – knowing who else is out there.
- Capacity and funding are an issue

74 of our respondents told us that between 0 -55 colleagues have also undertaken the training – average 8.4. people per organisation. As we have already analysed that the average responder works for an organisation with 16 paid and 84 paid staff/volunteers this figure of 8.4 trained staff represents a trained/ supported average of less than 10% staff per organisation.

Based on 86 respondents

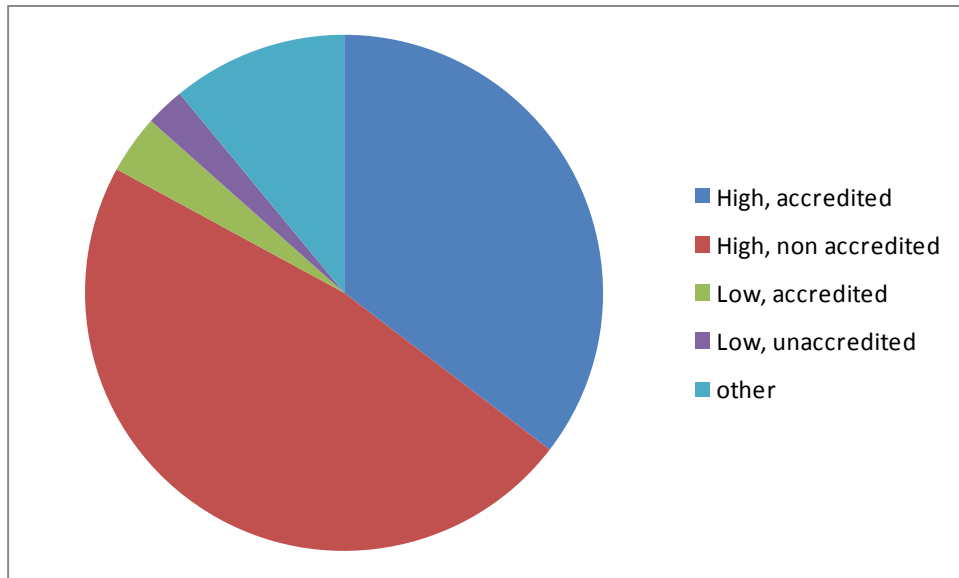
### **3.4 How much did it cost?**

The average cost per person appears to be around £25.00 and over 50 people were sure that the training hadn't cost them or their organisation anything. However, 15 people weren't sure about costs and 4 people stated that their organisations were charged a total cost of between £100 - £500 but were unable to state how many people received training for this total amount. These costs tie in with the details provided by the LSCB trainers who stated low or free charges to third sector organisations dependent upon their ability to pay.

### **3.5 How did you rate the standard of training?**

- 29 of our respondents stated that the training was accredited and of a high standard (36.7%)
- 39 of our respondents stated that the training was non-accredited and of a high standard ( 49.4%)
- 3 of our respondents stated that the training was accredited but of a low standard (3.8%)
- 2 of our respondents stated that the training was non accredited and of a low standard (2.5%)
- 9 of our respondents were unable to answer within the stated categories (11.4%).

Based on 77 respondents



### 3.6 Why did you attend?

- 23 of our respondents attended as it was mandatory (29.9%)
- 13 of our respondents attended as it was an identified training need (16.9%)
- 13 of our respondents requested to attend (16.9%)
- 28 of our respondents attended as the Safeguarding lead for their organisation (28%).

Based on 77 respondents

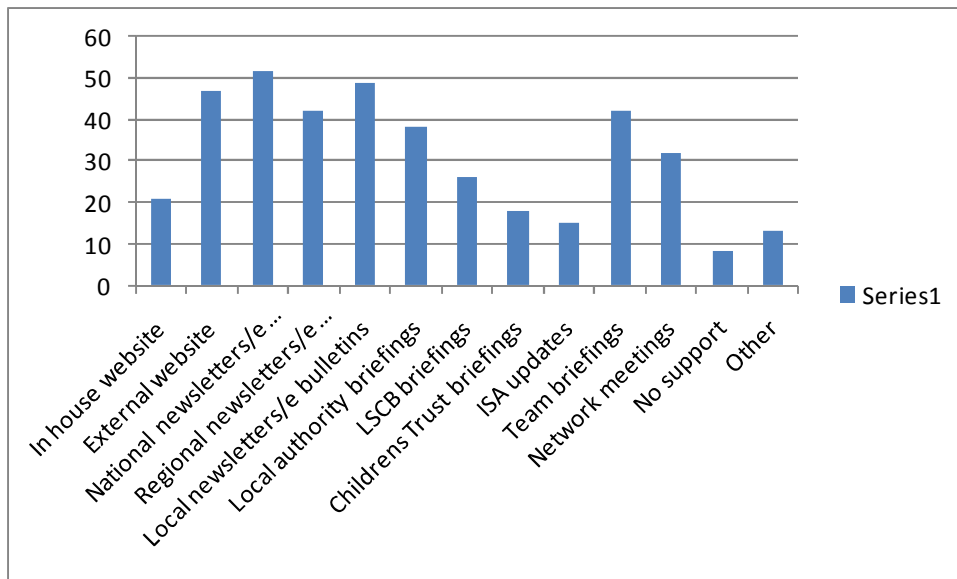
### 3.7 Future training for those who have not yet received it

- 22 of our respondents stated that training had been planned for them within the next 12-24 months (34.9%)
- 41 of our respondents are not aware of any training provision for them in the next 12-24 months (65.1%)

These figures may prove to be inaccurate as out of our 124 responders, only 41 stated that they had not yet received or been offered Safeguarding training; however, 63 people responded to the question 'if you have not yet received ant Safeguarding training, are you aware of any plans to undertake training within the next 12-24 months?'

### 3.8 General Safeguarding Support

The graph below identifies the current support and information received by our responders.

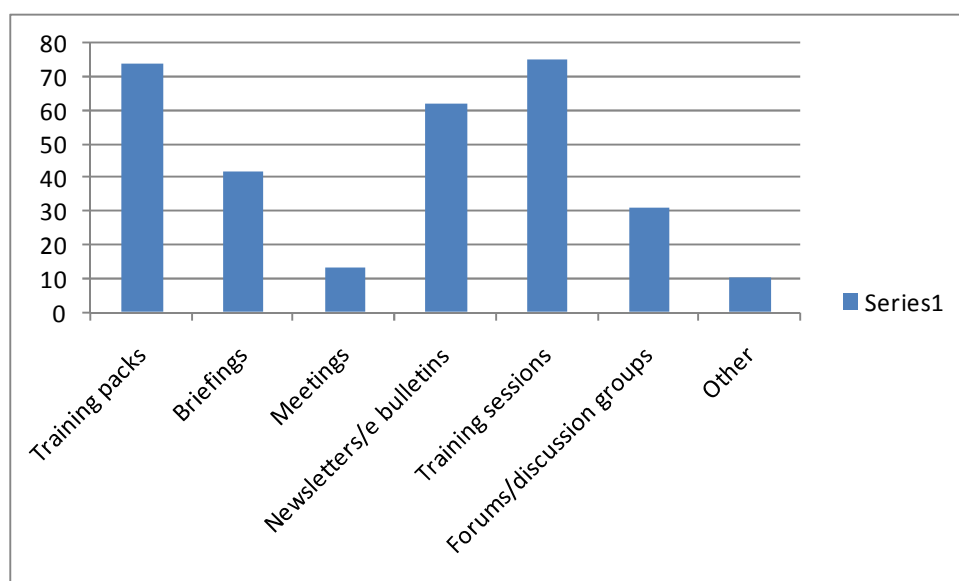


The 3 highest types of support received: national newsletters/e bulletins; local newsletters/ e bulletins and external websites. Other forms of support came from NCVYS (National Council for Voluntary Youth Services); the police; social services; NSPCC; the Church of England; internet search engines.

- 35 respondents stated that they were receiving high quality, timely and well informed support (28.2%)
- 56 respondents are receiving support but could benefit from more (45.2%)
- 18 respondents are not receiving adequate support and would welcome a more proactive approach (14.5%)
- 15 respondents stated that they receive no safeguarding support at all (12.1%).

Based on 124 respondents.

Finally, we asked our respondents what type of support they would find most useful in their work.



The most useful support would be Training sessions, training packs and newsletters/e bulletins. Other support included dedicated website, grants, e learning, an identified local contact for queries or concerns, outreach visits from qualified workers, updates, helpline and safeguarding supervision.

A number of responders signposted me to the regional website for Safeguarding and Child Protection; however, only 12 local authorities are currently linked to this site. It contains a useful 5 minute tutorial on Child Protection procedures and this type of information could be built upon as an alternative to attending a 1 -2 hour basic Awareness session that some local authorities offer. It would be useful for the new Unit to establish how many regional web based resources are available and how they could link to them.

[http://www.swcpp.org.uk/swcpp/swcpp\\_local.htm](http://www.swcpp.org.uk/swcpp/swcpp_local.htm)

Based on 124 respondents.

The major finding of the audit was that the average responder who had already received safeguarding training was likely to be involved in community activities; working for a local organisation employing around 16 paid staff and 84 volunteers; probably based in Devon; working across all the age groups; has received safeguarding training within the last 12 months of a high standard that cost around 325.00 and receiving good quality safeguarding support in the form of a local or national newsletter/e bulletin and from external websites. This picture ties up with the limited evidence received from LSCB trainers, all 4 of whom were able to confirm that they offer training to the thirds sector; albeit with some limitations.

A more negative picture to emerge is one which shows that nearly a third of our responders have not yet received training, may be working in organisations where less than 10% of their colleagues have received training and where over half of them may not know when they are likely to receive training.

## 4. Conclusions

The main conclusions that can be drawn from this audit are as follows:

- The audit did reach the populations specifically requested in the brief: volunteer led/ community based groups e.g. Mums and tots; Saturday football clubs; Mosque/ Sunday schools etc; those who do some work with children and young people but not as their main role, such as community centres, sports clubs etc; groups working with disabled children and young people; groups working on environmental projects involving children and young people; play projects.
- The audit managed to capture a good cross section of organisations working in the different age ranges
- The staffing profile of responding organisations was 16 paid and 84 unpaid staff
- 67% of organisations had received access to Safeguarding training and support
- 33% of our total responders have not received safeguarding training and do not have future provision of training in place.
- Good quality training is generally available at Basic /Level 1 for little or no cost; average £25.00
- Of those not yet in receipt of training 35% had training scheduled in for the next 12-24 months
- Smaller organisations, those with an average staffing profile of 7 paid and 15 unpaid staff, are considerably less likely to have been offered access to training;
- Across all our responders, only 10% of their colleagues had also undertaken recent Safeguarding training.
- Organisations in the Faith or Environmental category are more likely to have received training.
- Organisations in the Arts, Family and Uniformed categories are less likely to have received training.
- The majority of training was received from the local authority/LSCB or from own in-house training programme
- 86% of responders stated that the training was of a high standard
- Generally, respondents are already receiving support and information in the form of national and local newsletters/ e bulletins or external website and 28% of responders stated that is was high quality, timely and well informed.
- Nearly 30 % of respondents stated that they need more or better safeguarding information and support.
- The most useful support and information still needed by respondents were training sessions, training packs and newsletters/e bulletin.

## 5. Recommendations

My recommendation to the National Safeguarding Unit for the Third Sector in England would be as follows:

- Undertake a mapping exercise – using existing information from established networks – to determine who the ‘vulnerable’ organisations are
- Use organisations’ staffing profile information and organisational types to determine priorities
- Establish those organisations whose staff lack any Basic Awareness/ Level 1 training as a priority group
- Work with LSCBs and other training providers to develop an accredited Train the Train Safeguarding course; setting targets for the extent of training each ‘trainer’ is able to offer. Support third sector organisations to engage more meaningfully with LSCBs.
- Build a dedicated website and send out monthly update e bulletins using existing and established regional and local networks for wider dissemination.
- Promote regional and local safeguarding training opportunities by means of website and e bulletins
- Evaluate the most accessible means of training for harder to reach organisations and pilot them e.g. e- learning; in the south west travelling to training, particularly regionally based training, is challenging.

The SW Regional Youth Work Unit would like to express their heartfelt thanks to all their colleagues, networks and contacts in the region who so kindly encouraged their members to take part in the audit.

For more information regarding this report please contact the author Fiona Phur on 01823 347958 or by emailing [fiona\\_phur@learning-southwest.org.uk](mailto:fiona_phur@learning-southwest.org.uk) or in writing to Fiona Phur, Voluntary Youth Sector Development Worker, The Regional Youth Work Unit at Learning South West, Bishops Hull House, Bishops Hull, Taunton, Somerset TA1 2EP.

## Appendices

**Appendix A:** Questionnaire to LSCB's training managers or lead trainers.

### **Third Sector Safeguarding Unit SW England Needs Analysis**

Thank you for getting involved with this Audit. Your answers to the questions below will help provide an overview of the Third Sector's access to safeguarding advice, training and support, and a baseline assessment of need. Support provided by LSCBs, Children's Trusts and other statutory partners, voluntary sector infrastructure bodies and individual organizations with a training remit will be included.

Please consider the following questions and compile any information you have that will help to answer them.

You will be telephoned by Fiona Phur or Hayley Lazarus within the next week to discuss the questions.

**1. What is the name of your organization?**

---

**2. What is your role in the organization?**

---

#### **SAFEGUARDING ADVICE**

**3. Do you provide safeguarding advice to Third Sector organizations?**

Y/N

If yes, what and how

---

#### **SAFEGUARDING TRAINING**

**4. Do you provide safeguarding training to Third Sector organizations?**

Y/N

If yes, can you outline for each of your training programmes

1. Title and content of training
2. Cost to participants
3. Duration
4. Targeted participants (i.e. job/volunteer roles and numbers)
5. Level (e.g. introductory, level 2, accredited etc)
6. Where provided (e.g. your training facilities, in organizations)
7. How the training is evaluated.

**5. Can you provide a summary of the training you have provided over the last twelve months in the format above? Y/N**

If yes, please send to Hayley Lazarus at the address below

If no, why is this? \_\_\_\_\_

**TRAINING PARTICIPANTS**

**6. Do you have experience of providing safeguarding training to the following? Y/N**

If yes what is this?

1. Volunteer led groups eg Parent and Toddler Groups, Saturday football clubs, Sunday schools Y/N
2. Play Projects Y/N
3. Groups supporting disabled children Y/ N
4. Environmental projects involving children and young people Y/ N
5. Staff/volunteers in sports/community/arts centres Y/N
6. Any other community based staff/volunteers Y/N

**SAFEGUARDING SUPPORT**

**7. Do you provide any other support on safeguarding? Y/N**

If yes what is this?

\_\_\_\_\_

\_\_\_\_\_

**8. What is your assessment of the current scope and reach of safeguarding advice, training and support?**

\_\_\_\_\_

\_\_\_\_\_

**9. How can safeguarding advice, training and support for the Third Sector be improved?**

\_\_\_\_\_

\_\_\_\_\_

**10. Finally, if you have other information that might help build a picture of safeguarding advice, training and support (e.g. outline programmes, brochures) please send these to**

Hayley Lazarus, The Regional Youth Work Unit at Learning South West

Bishops Hull House

Bishops Hull

Taunton TA1 5EP

Somerset.

Email: [hayley\\_lazarus@learning-southwest.org.uk](mailto:hayley_lazarus@learning-southwest.org.uk)

Tel: 01823 365435

**THANK YOU FOR SUPPORTING THIS AUDIT**

## Appendix B: LSCB Trainers Questionnaire Results

QUESTIONS	LOCAL AUTHORITY LSCB TRAINERS			
	BRISTOL	CORNWALL & ISLES OF SCILLY	DEVON	WILTSHIRE
What is the name of your organization?	Bristol Safeguarding Children Board Training Section	LSCB Cornwall & isles of Scilly	Devon Safeguarding Childrens Board	Wiltshire Council
What is your role in the organization?	BSCB Administrator	LSCB Training Cordinator	Workforce Development Training manager	Multi Agency Safeguarding Trainer ( Staff Development Officer)
Do you provide safeguarding advice to Third Sector organizations? Y/N	No	Yes – advice is given via the IVO (Independent Voluntary Organisations) Steering group; website available to all and the training programme.	Yes, through many different channels and approaches; referrals from multi partner agencies. I am mainly responsible for Level 3 Multi Agency training – we have run 50 courses in the past 12 months and run 3 conferences attended by over 100 people at each event. I coordinate a College of Trainers with 9 partners – they provide the 44 partner trainers who are all practitioners with knowledge and practice of Safeguarding and they have a dedicated budfget to train the multi agency trainers – TSOs can access this if their job needs it. The	Yes , advice given on matters such as child protection policies

			<p>Partners Board consists of: Barnados, Health trusts, Police, Fire, DECCA?, ADVA/, NSPCC, Educational Welfare, Probation Service.</p> <p>The most accessed training by TSOs is the ½ day level 2 course via T4T courses which is then cascaded. Some of this T4T is cascaded and evaluated by an organization called Transform</p>	
<p>Do you provide safeguarding training to Third Sector organizations? Y/N</p>	<p>Yes Title and content of training – Multi Agency Training Programme Cost to participants - April 2009 – March 2010 £70 full day £35 half day Duration Full day 9.30am-4.30pm Half Day (3 hours) Targeted participants (i.e. job/volunteer roles and numbers) Staff from all agencies within Bristol. Level (e.g. introductory, level 2, accredited etc) Foundation, Level 1/2/3 and</p>	<p>Yes Title and content of training – Via CAMAT (Child Abuse Multi Agency Training) Cost to participants – free to vol sector Duration Tier1 is an Induction leaflet and a powerpoint presentation, Tier 2 is a 3 hour training session, Tier 3 is 1,2 or 3 days – vol sector have access to the 1 day course. Currently it is open primarily to statutory agencies and those who contribute to the LSCB training budget but there are 3 to 4 places per course open to third sector. We run specialist modules for people to undertake after Basic training – although there isn't a specific invite to TSO, they could attend if it was part of their work The Tier 2 course – 3</p>	<p>Yes– 4 different levels and 3 bespoke programmes for TSOs (1 ½ hour basic awareness; ½ day awareness course; 2 day level 3 multi agency course) Cost to participants - can be free or ½ price or bespoke dependant upon circumstances ( the partner rate is £60 for Multi Agency training) Duration – As above Targeted participants (i.e. job/volunteer roles and</p>	<p>Yes - They can access all safeguarding training via the <a href="http://www.wiltshirepathways.org">www.wiltshirepathways.org</a> website there are many courses There are five levels Level 1 safeguarding - for those who have regular contact with children and YP Level 2 for those who work regularly with C&amp;YP Level 3 for those with a particular responsibility Level 4 for operational managers Level 5 for strategic managers Updates for all of the above Costings depend on the organisation's ability to pay , some can access for free.</p>

	<p>specialized courses regarding Child Protection. Where provided (e.g. your training facilities, in organizations) 4 training venues – Portway Development Centre, Rosegreen Centre, Bristol 600 Training Centre, Withywood Centre. How the training is evaluated. At the end of each course a handout for candidates to complete. These stats are compiled at the end of the training programme.</p>	<p>hour Basic Awareness – is well taken up by Family Services for their mother and toddler groups, pre school groups etc. Targeted participants (i.e. job/volunteer roles and numbers) Where provided (e.g. your training facilities, in organizations) – across the county not just at Truro HQ – we go to where the need is How the training is evaluated. Currently just by the ‘happy sheets’ after the training but currently looking at how to evaluate long term impact upon practice through SWIAT (South West Inter Agency Trainers) and through the Cornwall and Isles of Scilly LSCB Workplan.</p>	<p>numbers) As job requirements Level (e.g. introductory, level 2, accredited etc) 1-4 Where provided (e.g. your training facilities, in organizations) Both – very often 1 TSO will provide venue and invite other TSos to attend How the training is evaluated – after course sheets</p>	
<p>Can you provide a summary of the training you have provided over the last twelve months in the format above?</p>	<p>Y I have attached our programme for the last year.</p>	<p>40 people have undertaken Train the Trainer courses We have run 3 community sessions on Saturdays on Internet Safety for Parents but the take up was very low. Feedback has been that they were promoted poorly. E safety has been proactively promoted via schools. We hold a Stakeholders Conference every 2 years to which TSO are invited. The IVO and LSCB held a conference in Oct 2008 on Emerging technologies and their Risks – it was very well received and will be repeated this year. There is a Faith Forum rep on the</p>	<p>Y but see our website</p>	<p>We provide about 75 courses from levels 1-5 and also courses which deal with the wider aspects of safeguarding , such as promoting the welfare of the child , there is usually at least one person from the voluntary sector on each.</p>

		LSCB and 2 vol sector reps.		
Do you have experience of providing safeguarding training to the following? *(see q'nnaire for list)	Yes – to all these groups	Play Projects Yes but through Family Services, rather than LSCB/CAMAT Groups supporting disabled children Yes – 2 or 3 good participating groups who have also trained the LSCB Environmental projects involving children and young people Yes, a couple Staff/volunteers in sports/community/arts centres Yes – especially leisure center managers doing T-4-T courses Any other community based staff/volunteers Yes – parents get specific training. Also, many dance companies and theatre groups. Cornwall Volunteer Bureau and Cornwall for Change.	Yes – all of these groups have accessed our training	We have ad hoc requests from various groups which cover all of the below , we will provide two course this year to music and theatre groups.
Do you provide any other support on safeguarding?	Y As attached programme	Child Protection Policy for the Third Sector and Safer Recruitment training will be posted onto the website shortly. Credit card sixed information including contact details and procedures that go into children and youth settings and libraries/health centres etc Each of the 3 districts produce Good practice and Child Protection Guidance for Sports Groups – have proactively encouraged Sport  England to send their coaches on LSCB training.	Yes – How to put a policy together; Safer recruitment procedures; Managing Allegations.	Yes, advice on CP policies
What is your assessment of the current scope and reach of safeguarding	Excellent and expanding yearly	LSCB currently offers 74 days per year of multi agency training + single agency training+ workshops. We need dedicated	Fairly good – mainly due to our very active training sub groups	Most seem aware of the <a href="http://www.wiltshirepathways.org">www.wiltshirepathways.org</a> website

advice, training and support?		trainers for Third Sector Organizations and more capacity and continuity. Need to promote it better but not until we have the capacity to meet the need.		
How can safeguarding advice, training and support for the Third Sector be improved?	No response	The TS needs to send the right people on the courses; especially T4T where some very unsuitable 'trainers' are sent on the courses.	The LSCB website is under construction. Need to have a wider range of contacts	By inviting more of them to become involved in the business of the local safeguarding children board possibly by having a coordinator who will represent the views of the groups

## **Appendix C:** **Transcript of Questions for online Regional Third Sector Safeguarding Audit**

### **Page 1/Survey description**

Thank you for making the time to take part in this audit questionnaire which has been commissioned by the National Safeguarding Unit for the Third Sector which is being set up and managed by the NSPCC and Children England (formerly NCVCCO).

The purpose of the survey is to obtain an overview of the access the third sector in this region has to safeguarding advice, training and support, and to provide a baseline assessment of need.

Here in the South West we are proud of the high standards that operate in youth work; in both statutory and voluntary settings. The Regional Youth Work is pleased to be carrying out the audit in the South West that will ensure that this work will continue to improve and develop with the highest of outcomes for our region's children and young people.

The gathered information will inform the action plan which will result in five key outcomes:

1. Third Sector organisations have effective safeguards in place to prevent the abuse of children and young people.
2. Recruitment practices for paid staff and volunteers in the Third Sector reflect best practice and are demonstrably safer.
3. Organisations have in place effective and proportionate arrangements for assessment and management of risk in all their activities involving children.
4. The safeguarding arrangements of Third Sector organisations are integrated into local inter-agency safeguarding arrangements.
5. Parents and carers of young people are able to identify the basic safeguarding arrangements that organisations involved with their children should have in place and to reassure themselves that this is the case.

The audit seeks to gain information from each of the 15 local areas in the SW region; therefore, you must be able to answer based on your working experience of **1 local area only**. After completion of the survey; please forward to any organisations in the region/area that you believe will be able to further inform the audit.

**Page 2/ Who Are You?**

This survey is only open to third sector organisations whose primary work is with children and young people aged 0-19 years ( up to 25 years for young people with special needs), OR whose work brings them into contact with children and young people, in local areas.

Q 1 Name of organisation:

Q 2 We are a :

- National organisation, working in a local area
- Regional organisation, working in a local area
- Local organisation

Q 3 We are delivering projects in the following area (tick only 1 area)

- Gloucester
- Bristol
- South Gloucester Bath and North East Somerset
- North Somerset Somerset
- Swindon Wiltshire
- Bournemouth Poole
- Dorset Devon
- Torbay Plymouth
- Jersey Cornwall & Isles of Scilly

Q 4 How many staff does your organisation employ in your area?

- Xxxx paid staff xxxxxxxx volunteers
- Don't know

Q 5. Our core work is with the following age group: (tick all that apply)

- Early years 0-5 years
- Children 5-13
- Young people 13-19
- Young people 20-25
- Other

Q 6 State the overall nature of your work i.e. sport, uniformed activities, play groups, faith work, community work etc and include relevant details to enable us to gain a better understanding of the contact you have with children and young people:

xx

**Formal Safeguarding Training**

Q 7 Have you/ your organisation been offered access to any form of safeguarding training within the past 12 months?

Yes – go to Q 8

No – go to Q 13

Don't know – Q 13

Q 8 If yes, who organised and delivered this training? (tick only 1 that applies); then move to Q 9:

Local Safeguarding Children's Board

Local Children's Trust

Local authority

Voluntary sector infrastructure body

A training organisation

Own organisation's in-house programme

Don't know

Other (please state)

Q 9 How many staff from your organisation (paid or unpaid) undertook the training?; then move to Q10

There were Xxxxxx staff

Don't know

Q10 What was the charge for the training? Move to Q11

It cost Xxxxxxxx

It was free

Don't know

Q 11 How did you rate the standard of the training? Then move to Q12

It was of a high standard and was accredited

It was of a high standard but was unaccredited

It was of a low standard but was accredited

It was of a low standard and was unaccredited

Other comments xxxxxxxxxxxxxxxx

Q 12 How was it decided that you should receive training? Answer whichever is applicable and then move to Q15

It was mandatory

I/my manager identified a need through our regular supervision/1:1

I asked to undertake the training

Noone else wanted to do it

I am the Safeguarding lead for my team/organisation

Other xxxxxxxxxxxxxxxxxxxxxxxx

Q 13 If you have not yet received any Safeguarding training, are you aware of any plans for you to undertake training within 12 – 24 months?

Yes – Move to Q 14

No – move to Q 15

Q 14 Are you aware of the nature of the training or support you will be undertaking?

Yes- please state xxxxxxxx, then move to Q 15  
No – move to Q 15 ,

**General Safeguarding Support**

Q 15 What other kinds of support and information do you currently access to keep updated with Safeguarding issues? Tick all that apply, then move to Q 16

- In house website
- External website xxxxxxxxxx
- National newsletters/e bulletins
- Regional newsletters/ e bulletins
- Local newsletters/ e bulletins
- Local authority briefings
- Local Safeguarding Childrens Board briefings
- Children’s Trust briefings
- ISA updates
- Team briefings
- Network meetings
- I do not currently receive any support or information regarding Safeguarding Other  
xxxxxxxxxxxxxxxx

Q 16 What, in your opinion, is the level of Safeguarding support that you are currently receiving? Tick 1 response then move to Q 17

- I am receiving high quality, timely and well informed support
- I am receiving some support but could benefit from more
- I am not receiving adequate support and would welcome a more proactive approach
- I receive no Safeguarding support at all.

Q17 Finally, what types of support would be the most useful to you in the work that you do with children and young people?

- Training packs                      Briefings
- Meetings                              Newsletters/e bulletins
- Training sessions Forums/discussion groups
- Other xxxxxxxxxxxxxx